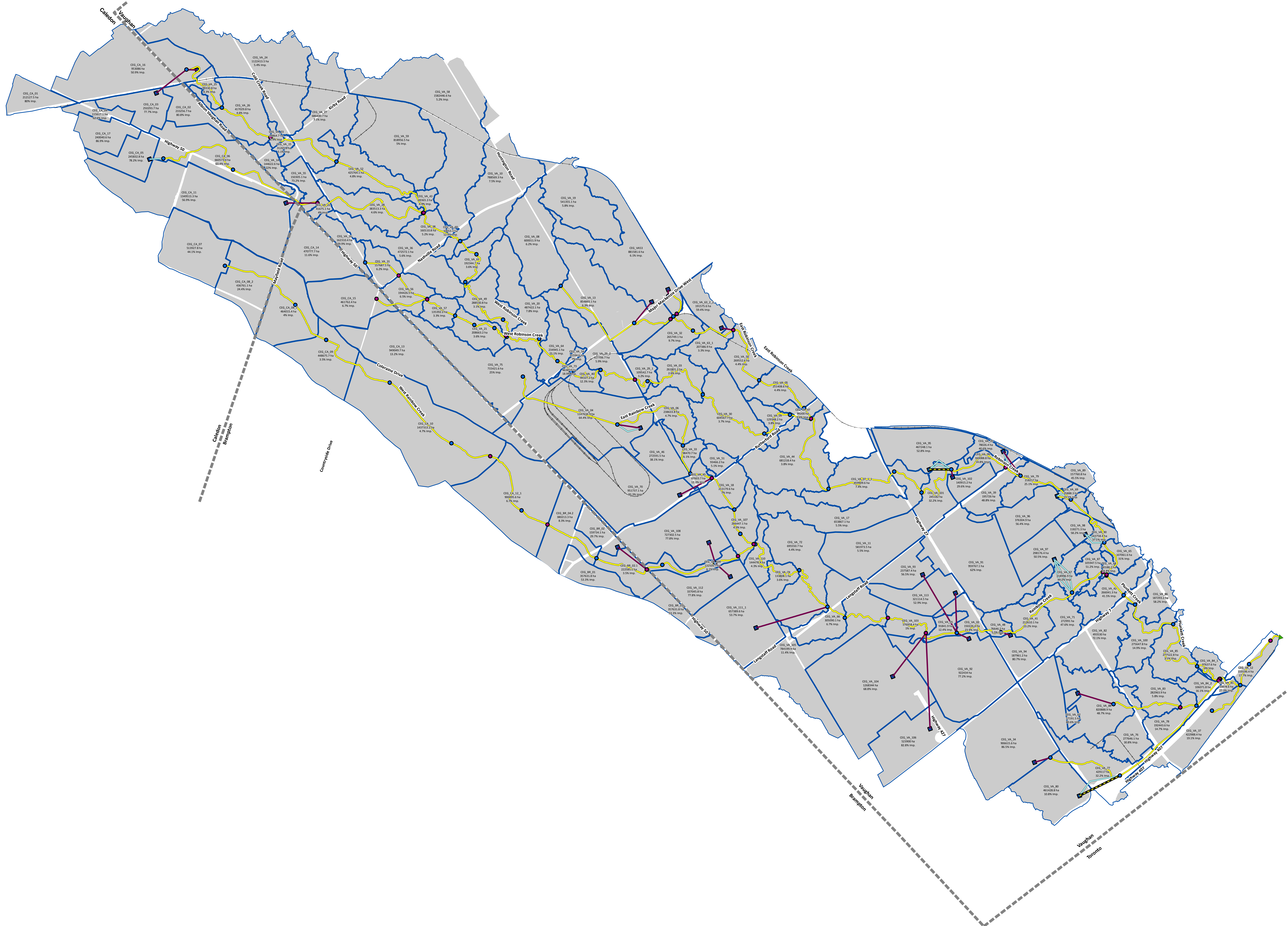
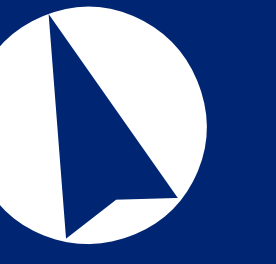


**APPENDIX A**  
**Drawings**

# Drainage Area Plan - Baseline Scenario (Draft)



## Legend

- Junctions**
- Flow Node From Regulatory HEC-RAS Model
- Flow Node Location
- ▲ Outfall Location
- Orifice
- Outlets To Creek Nodes
- Weirs
- Rainbow Creek
- Storage Facility
- ▭ Subcatchments



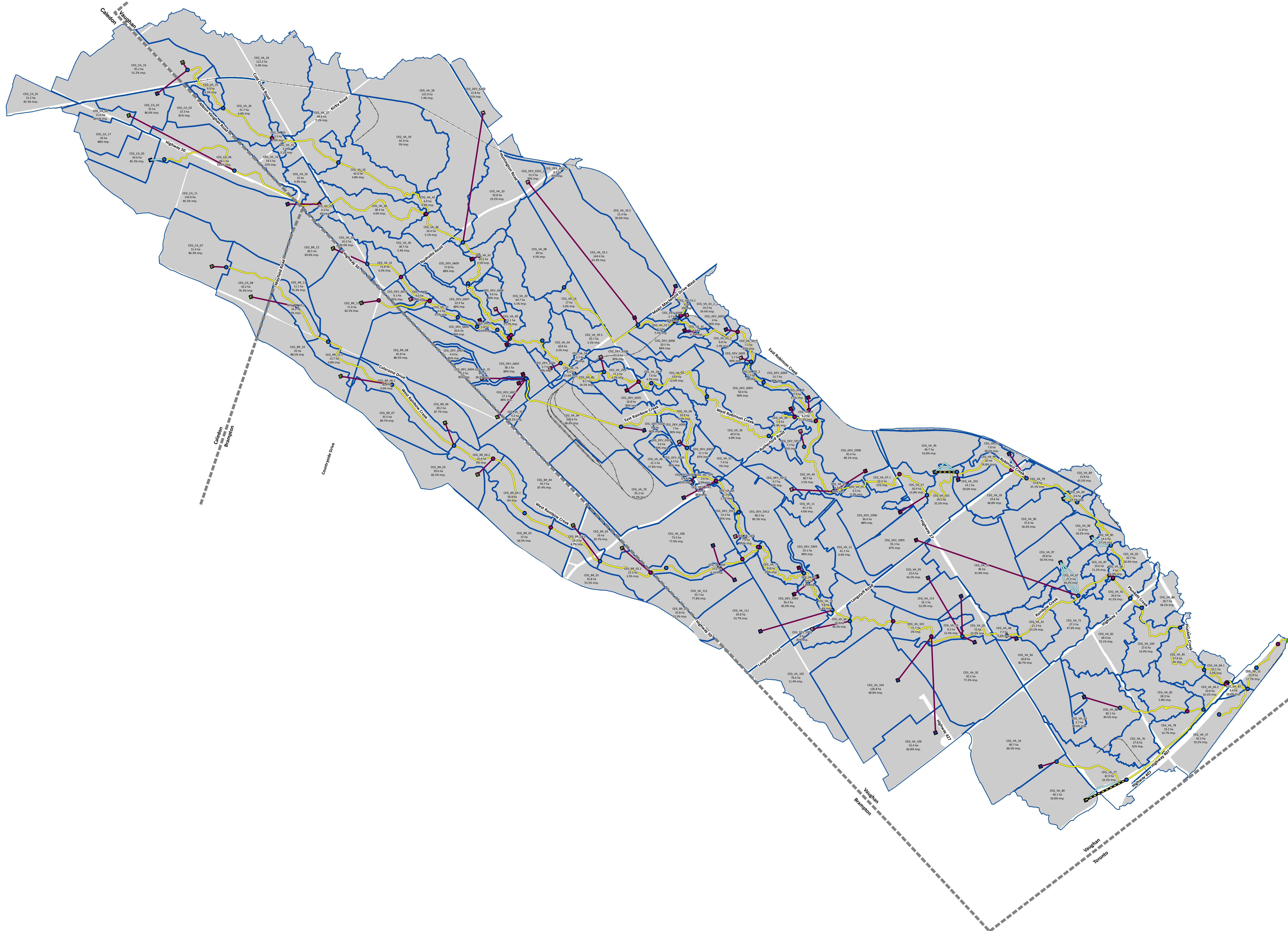
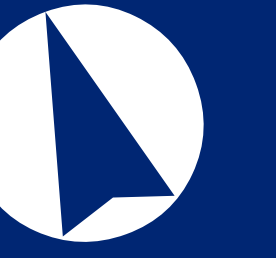
**Rainbow Creek Subwatershed Update**  
November 2013

Drainage Area Plan - Baseline Scenario

SCALE 1:15,000  
0 120 240 480 720 960 Metres

FIGURE  
**DAP-1**

# Drainage Area Plan - 2031 Scenario (Draft)



## Legend

- Junctions**
- Flow Node From Regulatory HEC-RAS Model
  - Flow Node Location
  - ▲ Outfall Location
- Structures**
- Orifice
  - Outlets To Creek Nodes
  - Weirs
  - Rainbow Creek
- Storage Facility**
- Existing/Approved
  - On-site Storage
  - Ponds
  - Other Storage
- Other**
- ⬭ Subcatchments
  - railway



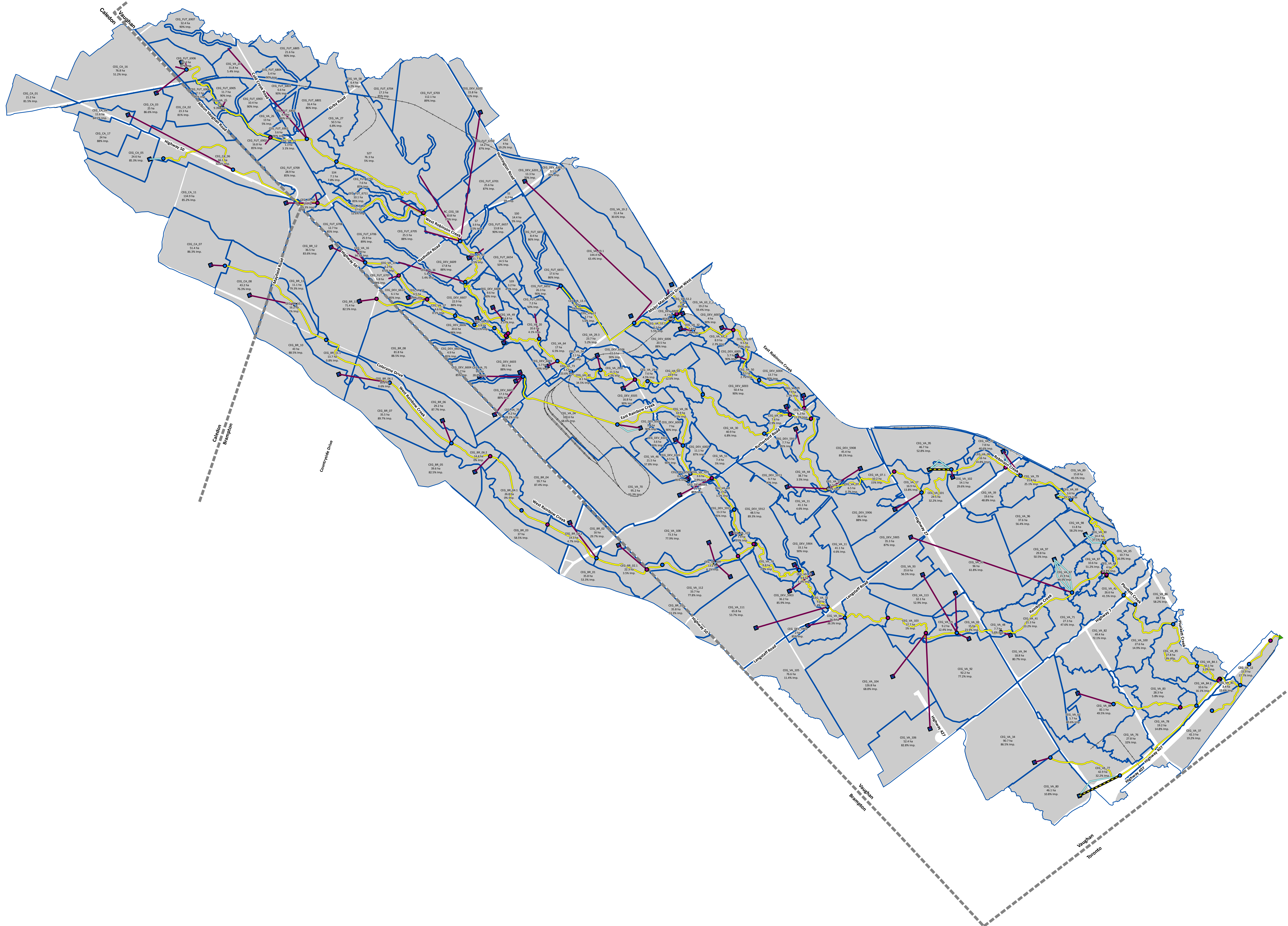
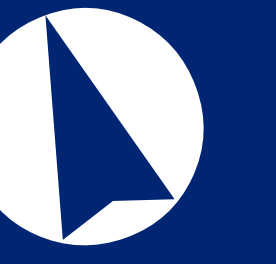
**Rainbow Creek  
Subwatershed Update**  
November 2013

Drainage Area Plan - 2031 Scenario

SCALE 1:15,000  
0 125 250 500 750 1000 Meters

FIGURE  
DAP-2

# Drainage Area Plan - 2051 Scenario (Draft)



## Legend

- Junctions**
- Flow Node From Regulatory HEC-RAS Model
  - Flow Node Location
  - ▲ Outfall Location
- Orifice
- Outlets To Creek Nodes
- Weirs
- Rainbow Creek
- Storage Facility
- ▭ Subcatchments
- railway



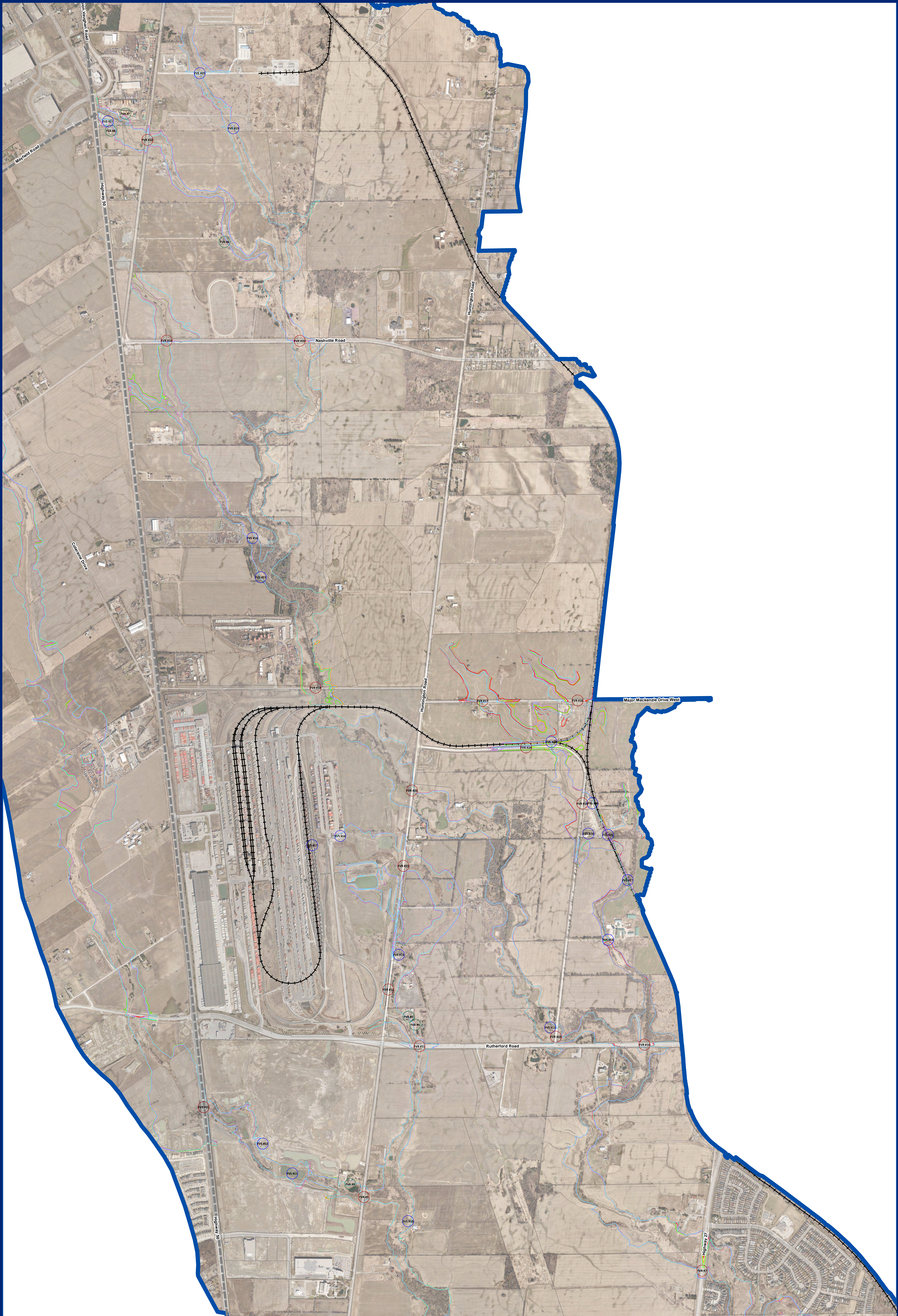
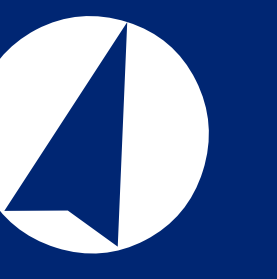
**Rainbow Creek Subwatershed Update**  
November 2013

Drainage Area Plan - 2051 Scenario

SCALE 1:15,000  
0 100 200 300 400 500 Metres

FIGURE  
**DAP-3**

# Rainbow Creek Floodlines (Draft)



## Legend

- Flood Vulnerable Areas
- Flood Vulnerable Structures
- Flood Vulnerable Roads
- TRCA Approved Floodlines (with New Topography)
- Draft 2011 Floodlines (Block 61W Pre-development)
- Draft 2031 Floodlines
- Draft 2051 Floodlines

## Notes:

TRCA Floodline elevations were established in the Digital Floodline Mapping for the Rainbow Creek Subwatershed Summary Report, Hatch Acres, June 2006

The 2007 DEM obtained from the City of Vaughan is used as the ground surface



**Rainbow Creek Subwatershed Update**  
November 2013

Existing Draft Floodlines

SCALE 1:7,000  
0 50 100 200 300 400  
Feet

FIGURE  
**FLA-1**