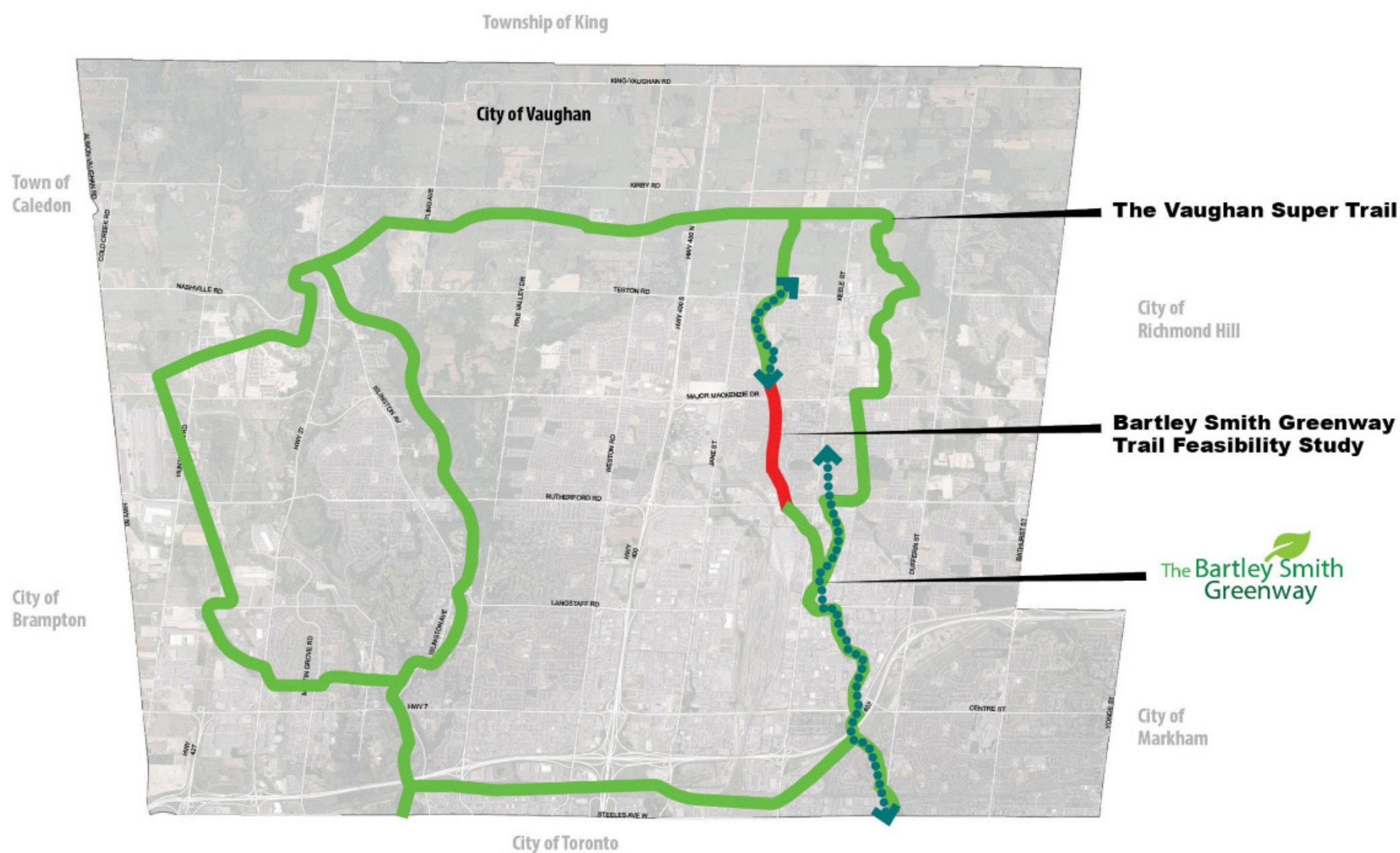


Schedule and Timeline

Study Area



Study Context

The purpose of this study is to identify a preferred route to close a three-kilometer gap in the trail between McNaughton Road and Rutherford Road. In doing so, the City will be one step closer to creating an interconnected and seamless network of city-wide cycling and walking trails.

The Bartley Smith Greenway is a 15-kilometre recreational, multi-use trail that is a key component of the Vaughan Super Trail, a world-class 100-kilometre-long city-wide trail network that connects users to nature, cultural heritage, communities and special destinations throughout the city of Vaughan.

Project Timeline & Next Steps

