



2.0 Location

The lands subject to these specific policies are identified on Figure 1: The North Kleinburg-Nashville Secondary Plan Area.

2.1 Study Area

The primary study area for this Review includes the lands designated 'Rural Area' and the 'Nashville Core Area' as per the Kleinburg-Nashville Community Plan Area (OPA 601) (see Figure 1- Aerial View).

The 'Nashville Core Area' designation consists of the historic Nashville Road corridor, east of Huntington Road extending to the CPR line. The 'Nashville Core Area' encompasses an area of about 6.3 hectares (shown as Area 1 on Figure 1).

The designated 'Rural Area' is comprised of seven separate areas located along the northern edges of the Kleinburg-Nashville Community Plan Area. Three of the seven areas are quite significant in size, ranging from about 41 to 65 hectares (shown as sites 2, 5 and 6 on the adjacent map), while the remaining three are comparatively small, ranging from about 1 to 6 hectares (identified as Focus Areas 1, 3, 4 and 7 on Figure 1).

Table 1 below summarizes the approximate land area of the primary study areas.

Table 1. Summary of land areas (ha) within the primary study area

Area No.	Designation	Area (ha)
Area 1	Nashville Core Area	6.32
Area 2	Rural Area	65.60
Area 3	Rural Area	5.69
Area 4	Rural Area	4.14
Area 5	Rural Area	41.34
Area 6	Rural Area	50.94
Area 7	Rural Area	1.28

For contextual purposes, the area known as Block 61 is also illustrated on Figure 1. An Official Plan Amendment for these lands has been adopted by City of Vaughan Council.

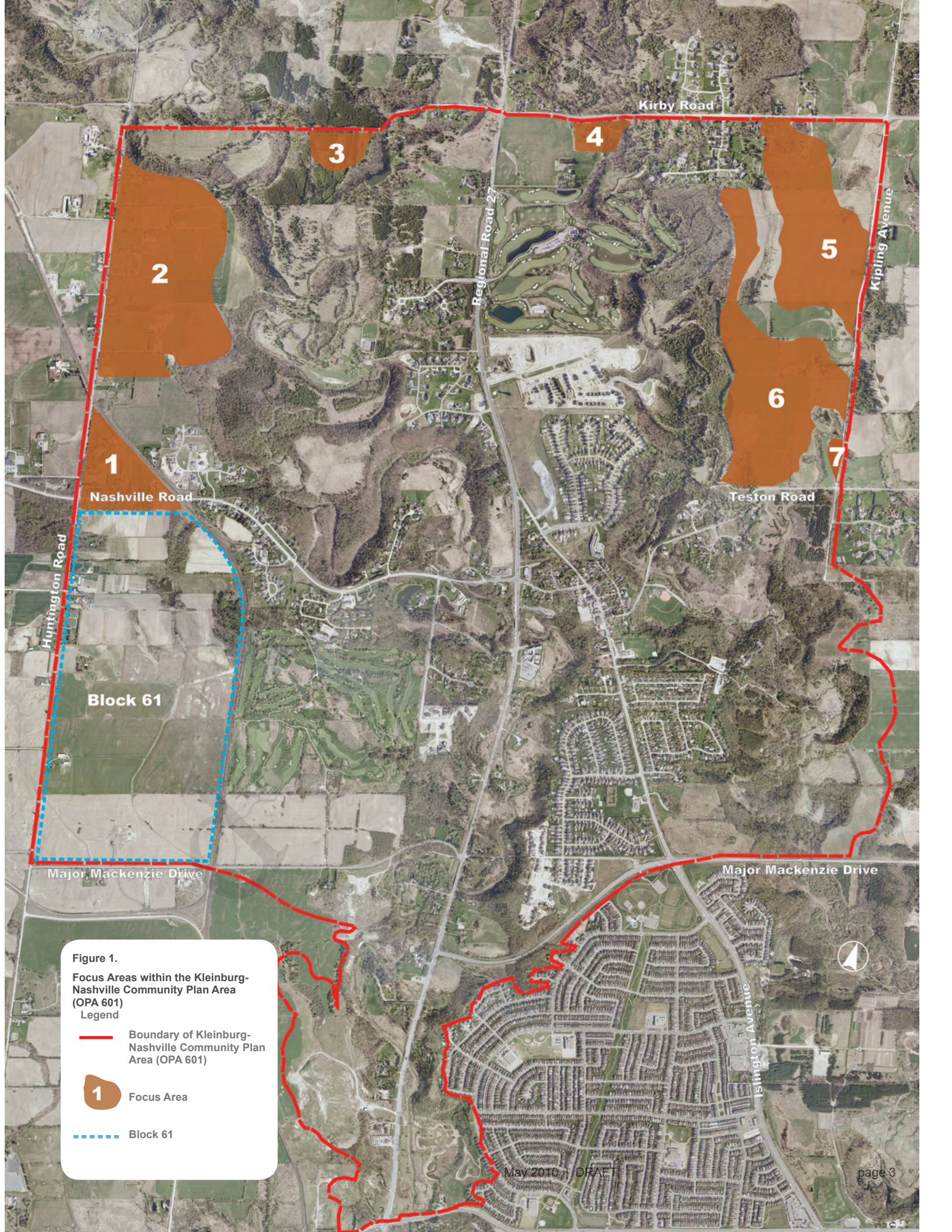



Figure 1.

Focus Areas within the Kleinburg-Nashville Community Plan Area (OPA 601)

Legend

 Boundary of Kleinburg-Nashville Community Plan Area (OPA 601)

 Focus Area

 Block 61